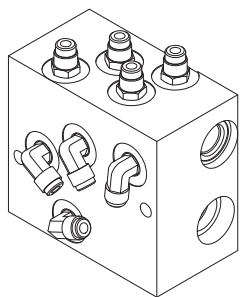




HYDRAULIC VALVES AND ACCESSORIES

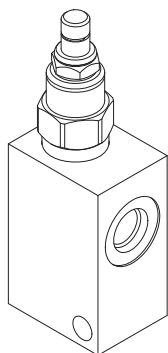
RELIEF VALVES AND PRESSURE GAUGES



SIDE SHIFT CHECK VALVE

The CBI check manifold can be used for side-shift attachments, carton clamps, and basic clamps. It features three functions in one, check valve, side shift valve, and flow combiner. Will fit most brands of clamps, features equal arm movement, integral side shift function, and a strong and light aluminum alloy body. Easy to install as a new item, or as an upgrade or replacement.

CBI part number **CB 14133** Weight: 7.6 lbs



ALL POSITION RELIEF VALVE

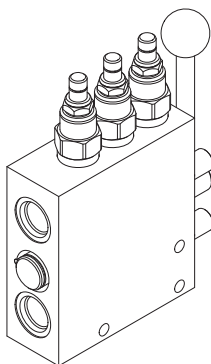
A high quality relief valve.

Port Size 3/8" NPT

Flow Range: 0-24 GPM at 3000 PSI

Adjustment Range: 100-3000 PSI

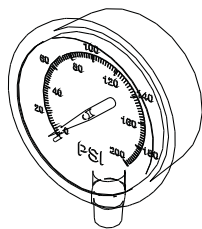
CBI Part Number **RD1537** Weight: 0.6 Lbs



3 POSITION RELIEF VALVE

A 3 position relief valve can be used to attain 3 different pre-set pressures on a clamp, for example you may need settings for soft or fragile loads, medium loads and heavy loads. With this heavy duty aluminum and steel valve, you just pick your setting and go.

Pressure setting range: 600-900-1200 adjustable
CBI Part Number **CB 1500** Weight: 3.4 Lbs



PRESSURE GAUGE

High quality Glycerin Filled pressure gauge with a 1/4" Stem Mount and a 2 5/8" Face,

CBI Part Number **CB-3000-S**

RELATED PRODUCTS

- Waterman valves page G-3
- Electric Control Handles page G-2
- 2 and 3 function kits page G-1
- Revolving Connector page G-6
- Hydraulic Fittings page G-7
- Hydraulic Drive Motors page G-5

